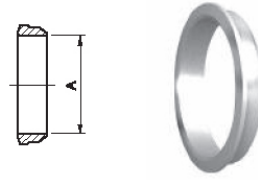


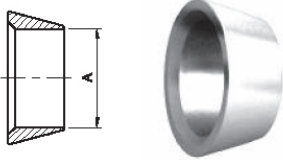
# BACK FERRULE



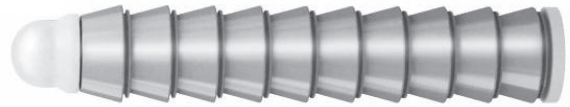
A Tube O.D.
mm
2
3
4
6
8
10
12
14
15
16
18
20
25
28
32
38
42

A Tube O.D.	
in	mm
1/16	1.58
1/8	3.17
3/16	4.76
1/4	6.35
5/16	7.93
3/8	9.52
1/2	12.70
5/8	15.87
3/4	19.05
7/8	22.22
1	25.40
1-1/4	31.75
1-1/2	38.10
2	50.80

# FRONT FERRULE



# FERRULE SET



A Tube O.D.
mm
2
3
4
6
8
10
12
14
15
16
18
20
22
25
28
32
38
42

A Tube O.D.	
in	mm
1/16	1.58
1/8	3.17
3/16	4.76
1/4	6.35
5/16	7.93
3/8	9.52
1/2	12.70
5/8	15.87
3/4	19.05
7/8	22.22
1	25.40
1-1/4	31.75
1-1/2	38.10
2	50.80

Tube O.D.
mm
2
3
4
6
8
10
12
14
15
16
18
20
22
25
28
32
38
42

Tube O.D.	
in	mm
1/16	1.58
1/8	3.17
3/16	4.76
1/4	6.35
5/16	7.93
3/8	9.52
1/2	12.7
5/8	15.87
3/4	19.05
7/8	22.22
1	25.40
1-1/4	31.75
1-1/2	38.10
2	50.80

\* The ferrule set contains one front ferrule and back ferrule. Please order ferrule sets in multiples of ten.